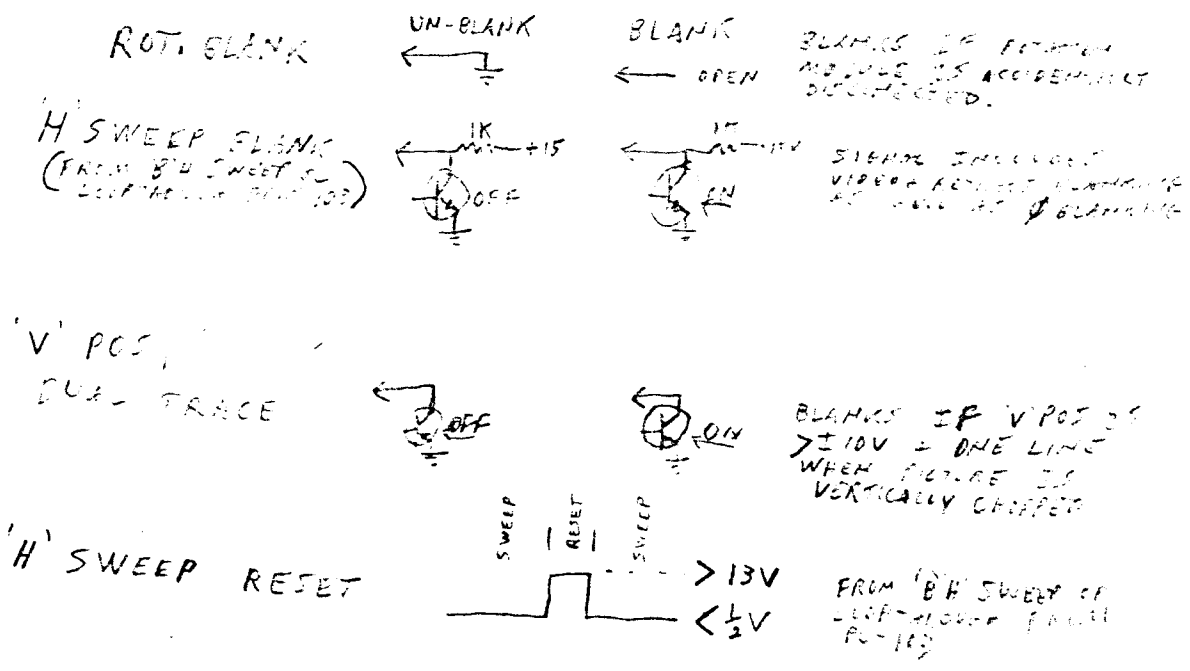


PC-104 'V' & 'H' SWEEP & BLANKING OUTPUT

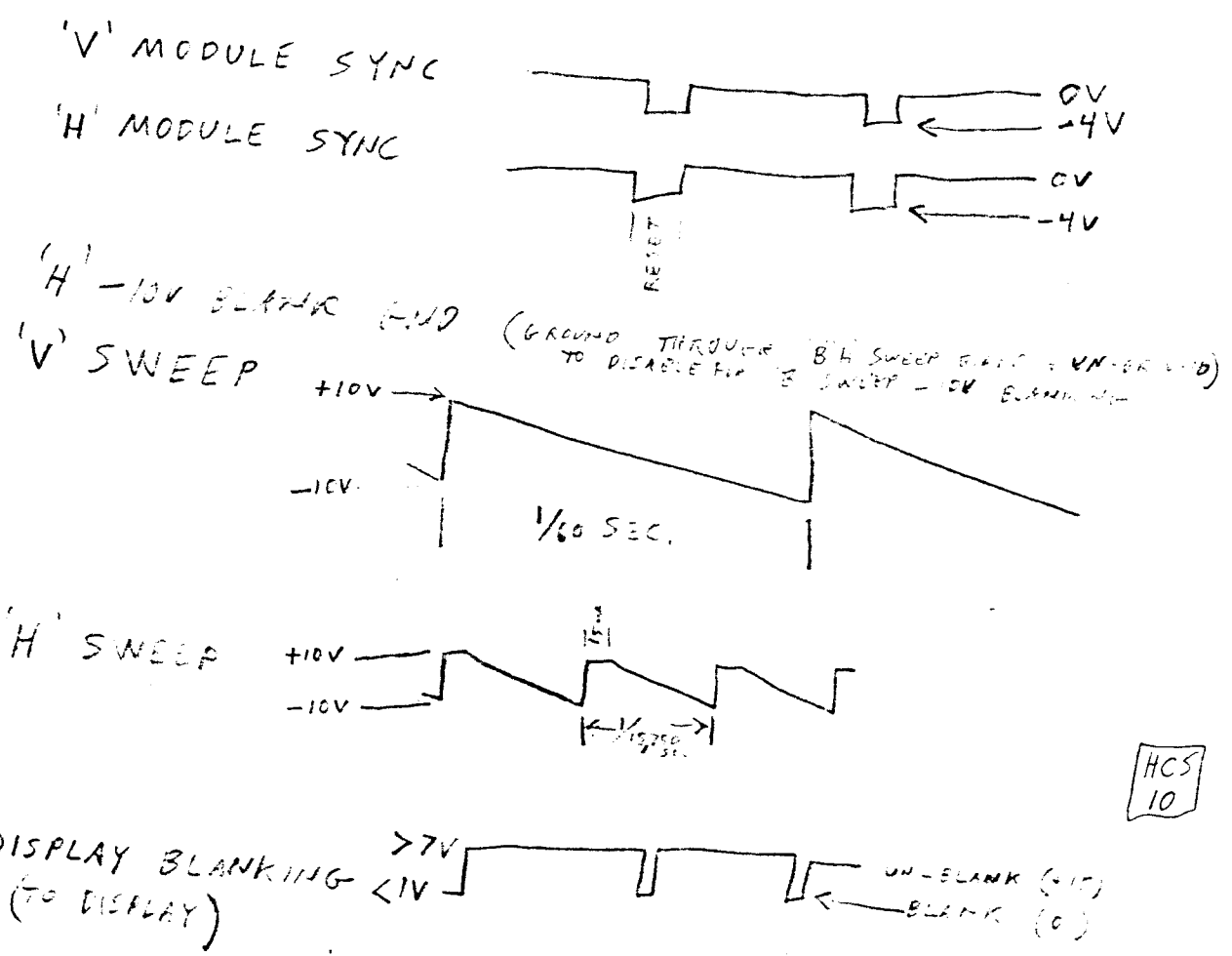
INPUTS

FROM



OUTPUTS

TO



HCS 10

100MA
- 20 MA

FL-104

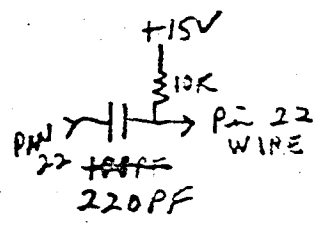
- IC-1 SG-4501
- IC-2 555 'V' RESET TIME
- IC-3 555 'V' UN-BLANK
- IC-4 555 'H' RESET TIME
- IC-5 LM 318 'H' INTEGRATOR
- IC-6 AH0133CD - AH0134CD RET. SWITCH
- IC-7 LM 318 'V' INTEGRATOR
- IC-8 LM 319 COMP. FOR SWEEP -11V BLANK

- Q-1 NPN 40409
- Q-2 PNP 40410
- Q-3 NPN - 2N3565
- Q-4 NPN -
- Q-5 NPN -
- Q-6 NPN -
- Q-7 PNP
- Q-8 NPN -
- Q-9 PNP
- Q-10 NPN -
- Q-11 NPN -
- Q-12 PNP
- Q-13 NPN -

- D-1 5V ZENER
- D-2 5V ZENER
- D-3 1N914

CHANGE TO
1K RESISTORS

ADD



- R-8 'V' RESET - SET TP-1 FOR 1250μs POSITIVE PULSE WIDTH
- R-11 'V' UN-BLANK - SET TP-2 FOR 15.5μs POSITIVE PULSE WIDTH
- R-18 'H' RESET - SET TP-3 FOR 15μs POSITIVE PULSE WIDTH
- R-20 'H' SWEEP RESET VOLTAGE - SET TP-4 FOR +10V
- R-24 'H' SWEEP ΔV/ΔT
- R-31 'V' SWEEP RESET VOLTAGE - SET TP-5 FOR +10V
- R-34 'V' SWEEP ΔV/ΔT
- R-46 -11V SWEEP BLANK - SET TP-6 TO -11V

- | | | | |
|--------|---------------|------|----------|
| 4 C-1 | .1 CER ✓ | R-1 | .525 |
| 4 C-2 | .1 CER ✓ | R-2 | .525 |
| 4 C-3 | .1 GUV | R-3 | 100K |
| 1 C-4 | 15 20V TAN ✓ | R-4 | 4.7K |
| 1 C-5 | 25 775V TAN ✓ | R-5 | 4.7K |
| 1 C-6 | 25 775V TAN ✓ | R-6 | 75Ω |
| 1 C-7 | 220PF CER ✓ | R-7 | 1K - |
| 4 C-8 | .14 CER ✓ | R-8 | 20K POT |
| 4 C-9 | .14 MYL ✓ | R-9 | 75Ω - |
| 4 C-10 | .1 CER ✓ | R-10 | 33K - |
| 4 C-11 | .1 MYL ✓ | R-11 | 100K POT |
| 4 C-12 | .1 MYL ✓ | R-12 | 16K - |
| 4 C-13 | 100PF CER ✓ | R-13 | 10K - |
| 4 C-14 | 100PF CER ✓ | R-14 | 2.2K - |
| 4 C-15 | .1 CER ✓ | R-15 | 10Ω - |
| 4 C-16 | .001 MYL ✓ | R-16 | 10Ω - |
| 4 C-17 | 15 20V ✓ | R-17 | 1K - |
| 4 C-18 | 15 20V ✓ | R-18 | 20K POT |
| 4 C-19 | 15 20V TAN ✓ | R-19 | 75Ω - |
| 4 C-20 | .001 MYL ✓ | R-20 | 20K POT |
| 4 C-21 | 100PF CER ✓ | R-21 | 20K - |
| 4 C-22 | 15 20V TAN ✓ | R-22 | 1K - |
| 4 C-23 | 15 20V TAN ✓ | R-23 | 4.7K - |
| 4 C-24 | .14 MYL ✓ | R-24 | 20K POT |
| 4 C-25 | .14 MYL ✓ | R-25 | 10K - |
| 4 C-26 | 15 20V TAN ✓ | R-26 | 2.2K - |
| 4 C-27 | .14 CER ✓ | R-27 | 10Ω - |
| | | R-28 | 10Ω - |
| | | R-29 | 2.7K - |
| | | R-30 | 1K - |
| | | R-31 | 20K POT |
| | | R-32 | 10K - |
| | | R-33 | 10K - |
| | | R-34 | 20K POT |
| | | R-35 | 2.7K - |
| | | R-36 | 1K - |
| | | R-37 | 270Ω |
| | | R-38 | 270Ω |
| | | R-39 | 10K - |
| | | R-40 | 100K - |
| | | R-41 | 100K - |
| | | R-42 | 100K - |
| | | R-43 | 100K - |
| | | R-44 | 20K - |
| | | R-45 | 75Ω - |
| | | R-46 | 20K POT |
| | | R-47 | 75Ω - |

CER - CERAMIC
TAN - TANTALUM
MYL - MYLAR

H-3

+100MA
- 20 MA

PC-104

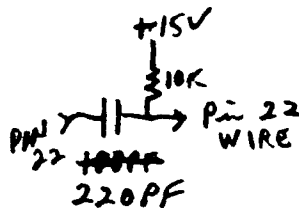
- IC-1 SG-4501
- IC-2 555 'V' RESET TIME
- IC-3 555 'V' UN-BLANK
- IC-4 555 'H' RESET TIME
- IC-5 LM 318 'H' INTEGRATOR
- IC-6 AH0133CD ~ AH0134CD RET. SWITCH
- IC-7 LM 318 'V' INTEGRATOR
- IC-8 LM 319 COMPARTOR SWEEP -11V BLANK

- Q-1 NPN 40409
- Q-2 PNP 40410
- Q-3 NPN - 2N3565
- Q-4 NPN -
- Q-5 NPN -
- Q-6 NPN -
- Q-7 PNP
- Q-8 NPN -
- Q-9 PNP
- Q-10 NPN -
- Q-11 NPN -
- Q-12 PNP
- Q-13 NPN -

- D-1 5V ZENER
- D-2 5V ZENER
- D-3 1N914

CHANGE TO
1K RESISTORS

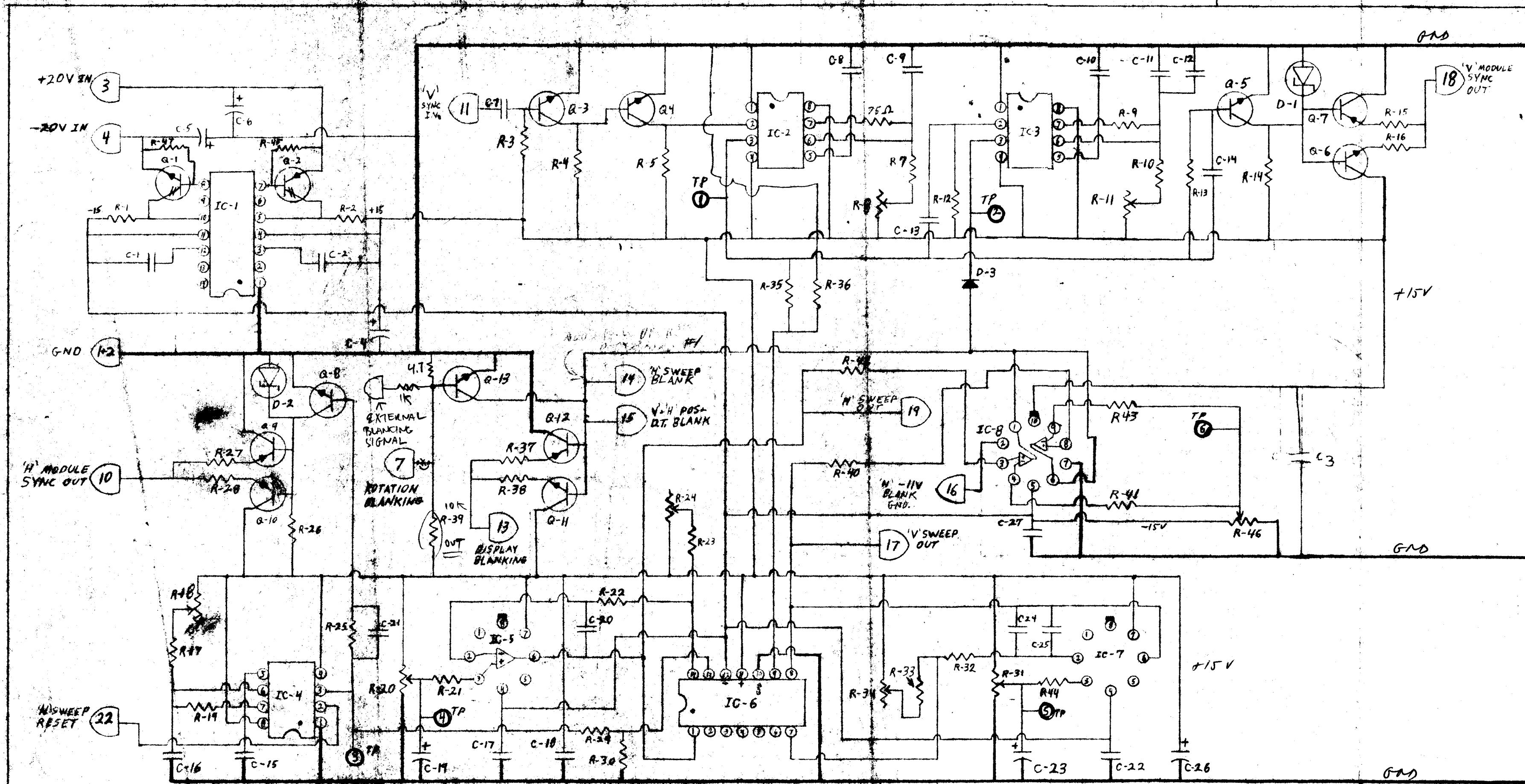
ADD



- | | | | | | |
|------|---|------|-----------------|------|----------|
| SIZE | 4 | C-1 | .1 CER ✓ | R-1 | .52 |
| | 4 | C-2 | .1 CER ✓ | R-2 | .52 |
| | 4 | C-3 | .14 CER ✓ | R-3 | 100K |
| | 3 | C-4 | 154 20V TAN ✓ | R-4 | 4.7K |
| | 3 | C-5 | 25.4 725V TAN ✓ | R-5 | 4.7K |
| | 3 | C-6 | 154 725V TAN ✓ | R-6 | 75Ω |
| | 4 | C-7 | 220PF CER ✓ | R-7 | 1K - |
| | 4 | C-8 | .14 CER ✓ | R-8 | 20K POT |
| | 4 | C-9 | .14 MYL ✓ | R-9 | 75Ω - |
| | 4 | C-10 | .1 CER ✓ | R-10 | 33K - |
| | 4 | C-11 | .1 MYL ✓ | R-11 | 100K POT |
| | 4 | C-12 | .1 MYL ✓ | R-12 | 10K - |
| | 4 | C-13 | 100PF CER ✓ | R-13 | 10K - |
| | 4 | C-14 | 100PF CER ✓ | R-14 | 2.2K - |
| | 4 | C-15 | .14 CER ✓ | R-15 | 10Ω - |
| | 4 | C-16 | .001 MYL ✓ | R-16 | 10Ω - |
| | 4 | C-17 | 154 20V ✓ | R-17 | 1K - |
| | 4 | C-18 | 154 20V ✓ | R-18 | 20K POT |
| | 4 | C-19 | 154 20V TAN ✓ | R-19 | 75Ω - |
| | 4 | C-20 | .0014 MYL ✓ | R-20 | 20K POT |
| | 4 | C-21 | 100PF CER ✓ | R-21 | 20K - |
| | 4 | C-22 | 154 20V TAN ✓ | R-22 | 10Ω - |
| | 4 | C-23 | 154 20V TAN ✓ | R-23 | 4.7K - |
| | 4 | C-24 | .14 MYL ✓ | R-24 | 20K POT |
| | 4 | C-25 | .14 MYL ✓ | R-25 | 10K - |
| | 4 | C-26 | 154 20V TAN ✓ | R-26 | 2.2K - |
| | 4 | C-27 | .14 CER ✓ | R-27 | 10Ω - |
| | 4 | C-28 | .14 CER ✓ | R-28 | 10Ω - |
| | 4 | C-29 | .14 CER ✓ | R-29 | 2.7K - |
| | 4 | C-30 | .14 CER ✓ | R-30 | 1K - |
| | 4 | C-31 | .14 CER ✓ | R-31 | 20K |
| | 4 | C-32 | .14 CER ✓ | R-32 | 20K POT |
| | 4 | C-33 | .14 CER ✓ | R-33 | 10K - |
| | 4 | C-34 | .14 CER ✓ | R-34 | 20K POT |
| | 4 | C-35 | .14 CER ✓ | R-35 | 2.7K - |
| | 4 | C-36 | .14 CER ✓ | R-36 | 1K - |
| | 4 | C-37 | .14 CER ✓ | R-37 | 270Ω |
| | 4 | C-38 | .14 CER ✓ | R-38 | 270Ω |
| | 4 | C-39 | .14 CER ✓ | R-39 | 10K |
| | 4 | C-40 | .14 CER ✓ | R-40 | 100K |
| | 4 | C-41 | .14 CER ✓ | R-41 | 100K |
| | 4 | C-42 | .14 CER ✓ | R-42 | 100K |
| | 4 | C-43 | .14 CER ✓ | R-43 | 100K |
| | 4 | C-44 | .14 CER ✓ | R-44 | 20K |
| | 4 | C-45 | .14 CER ✓ | R-45 | 75Ω |
| | 4 | C-46 | .14 CER ✓ | R-46 | 20K POT |
| | 4 | C-47 | .14 CER ✓ | R-47 | 75Ω |

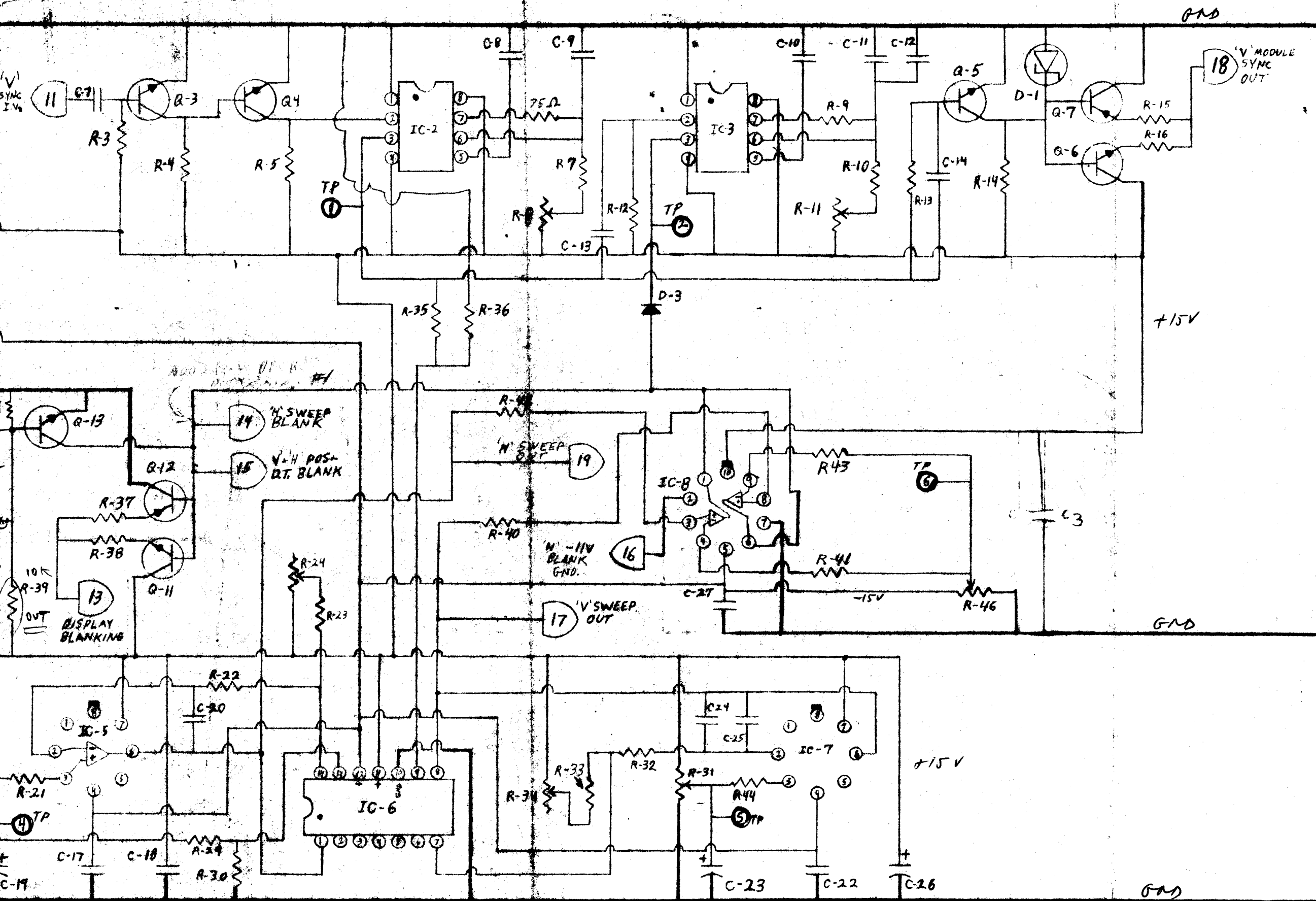
- R-8 'V' RESET - SET TP-1 FOR 1250ms POSITIVE PULSE WIDTH
- R-11 'V' UN-BLANK - SET TP-2 FOR 15.5ms POSITIVE PULSE WIDTH
- R-18 'H' RESET - SET TP-3 FOR 15ms POSITIVE PULSE WIDTH
- R-20 'H' SWEEP RESET VOLTAGE - SET TP-4 FOR +10V
- R-24 'H' SWEEP ΔV/ΔT
- R-31 'V' SWEEP RESET VOLTAGE - SET TP-5 FOR +10V
- R-34 'V' SWEEP ΔV/ΔT
- R-46 -11V SWEEP BLANK - SET TP-6 TO -11V

CER - CERAMIC
TAN - TANTALUM



PC-104

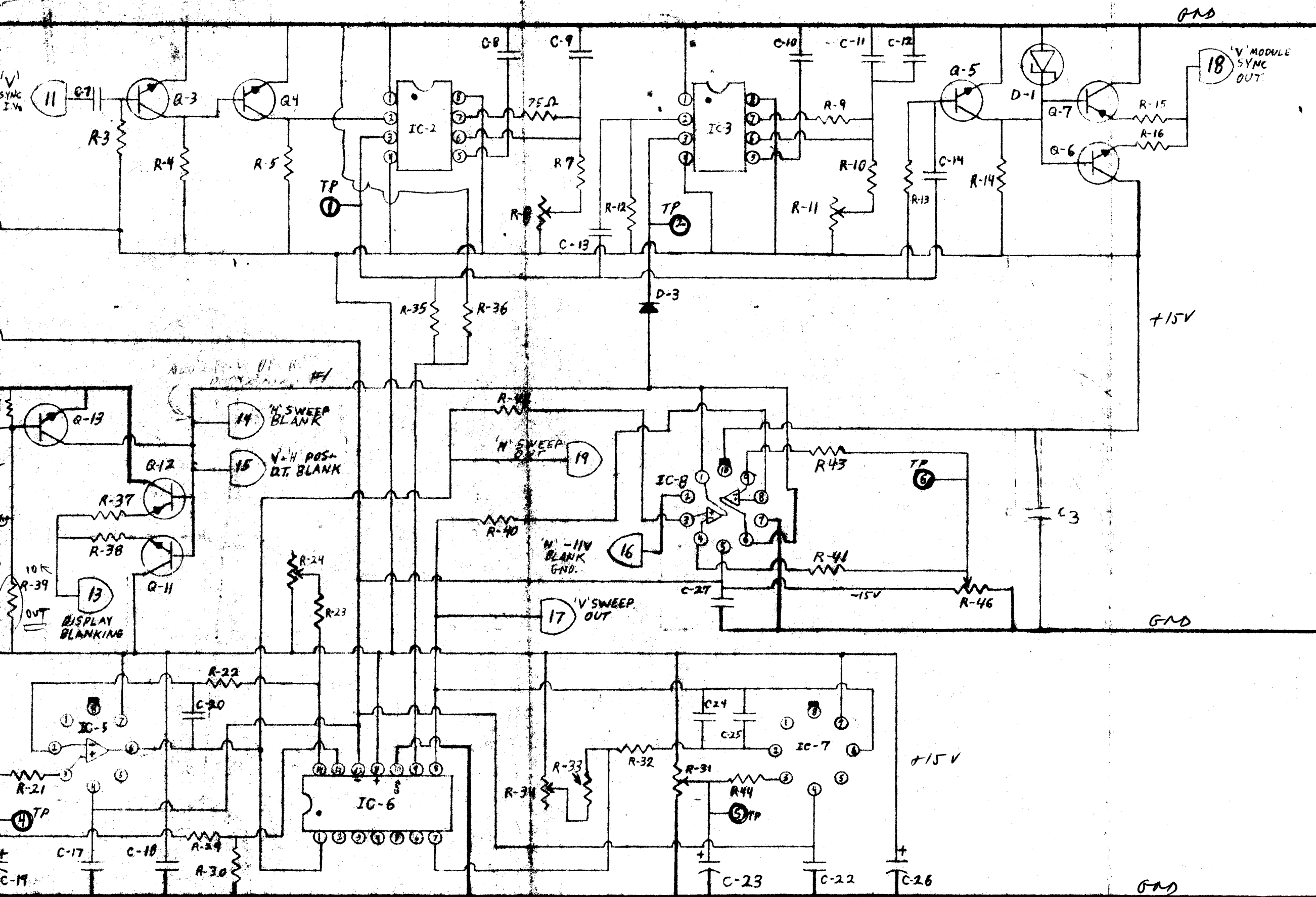
SE MODIFIED
FOR QX7



PC-104

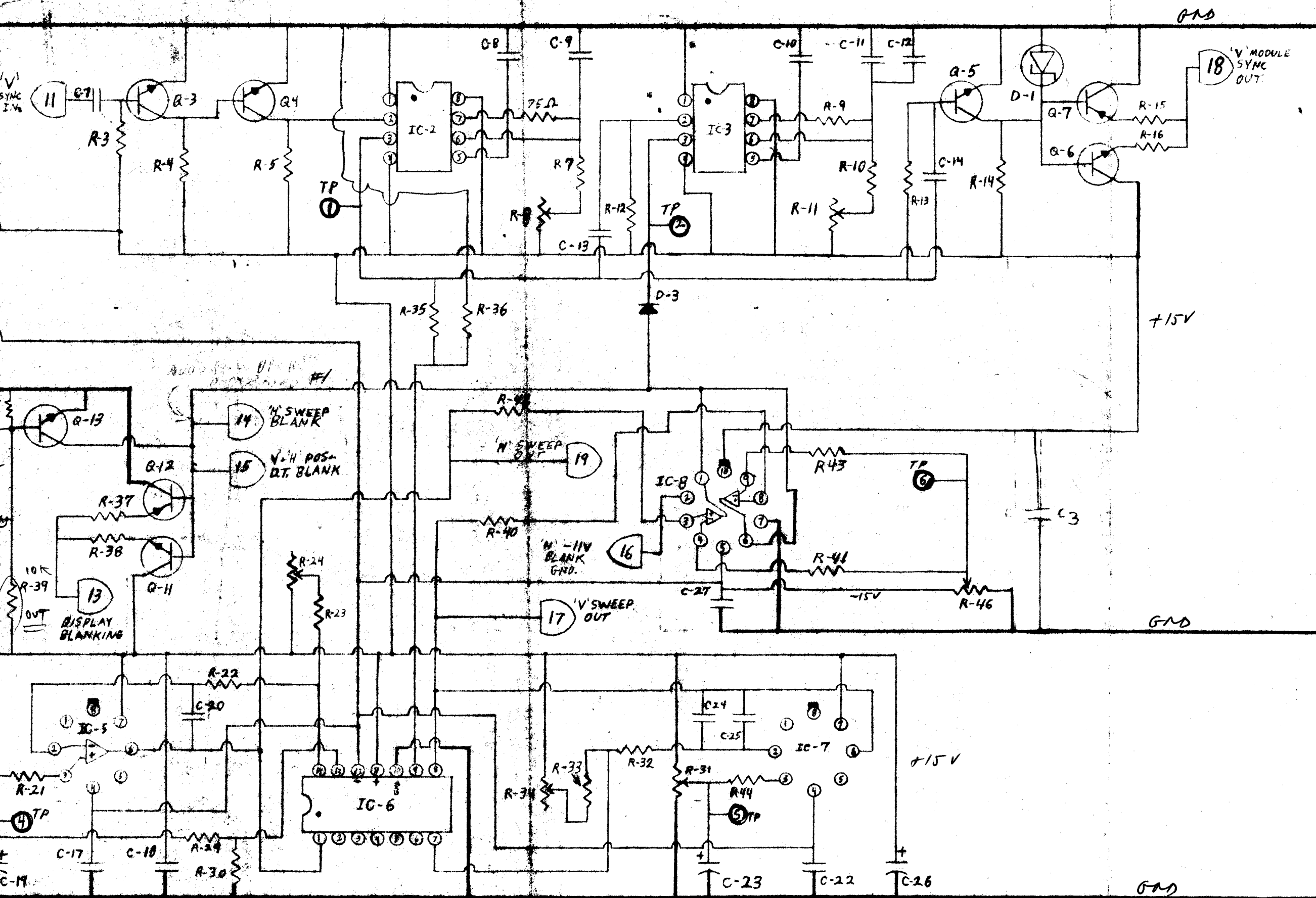
SE MODIFIED

FOR EX7



PC-104

SE MODIFICATION
FOR QX7 BLKING



PC-104

SE MODIFICATION
FOR QX7 BLKING